



Wildfire, Water Source Protection and the Rio Grande Water Fund

Laura McCarthy



06/26/2011 19:40

Las Conchas Fire, Day 1

Increasing areas of high-severity burn



Photo: Craig Allen, USGS

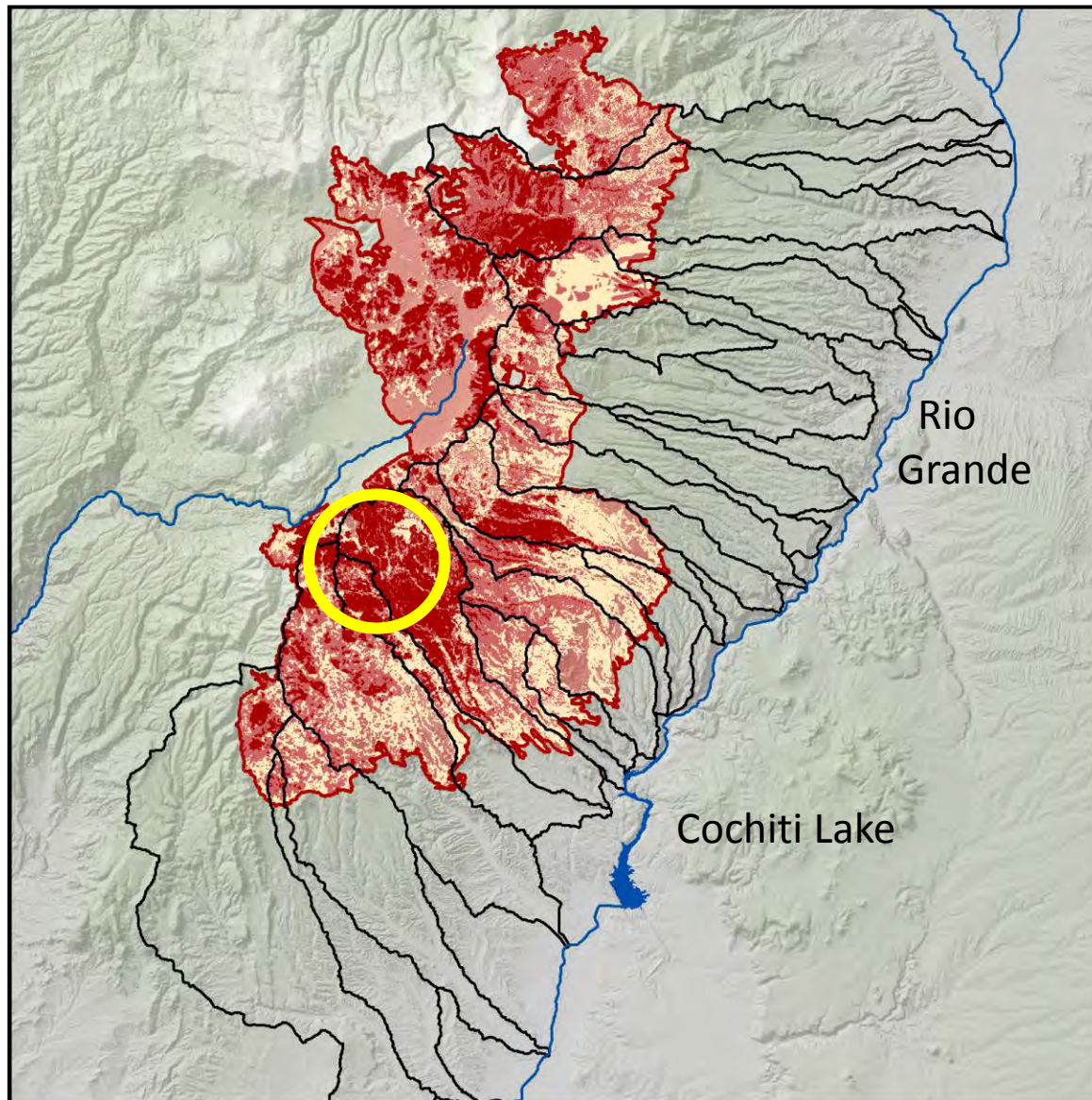


Photo: Craig Allen, USGS



Photo: Craig Allen, USGS
mid Cochiti Canyon

54% High-and Moderate-Severity Burn



Low
Medium
High

After Two Days of Average Monsoon Rains

Cochiti Canyon Flood Dixon's Apple Orchard

August 22, 2011

Post-Fire Flooding



Sedimentation

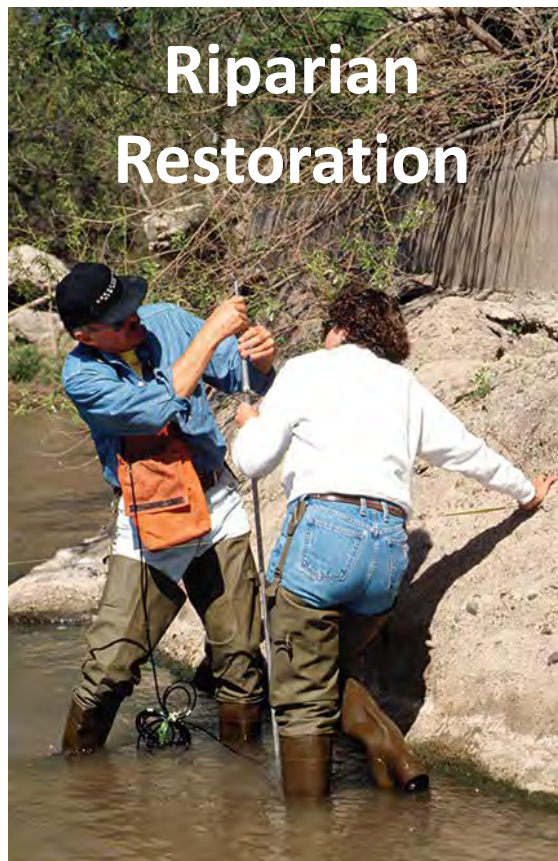


Water Quality



Science-based Solutions

Accelerate four strategies to meet the challenge and scale of severe wildfire:

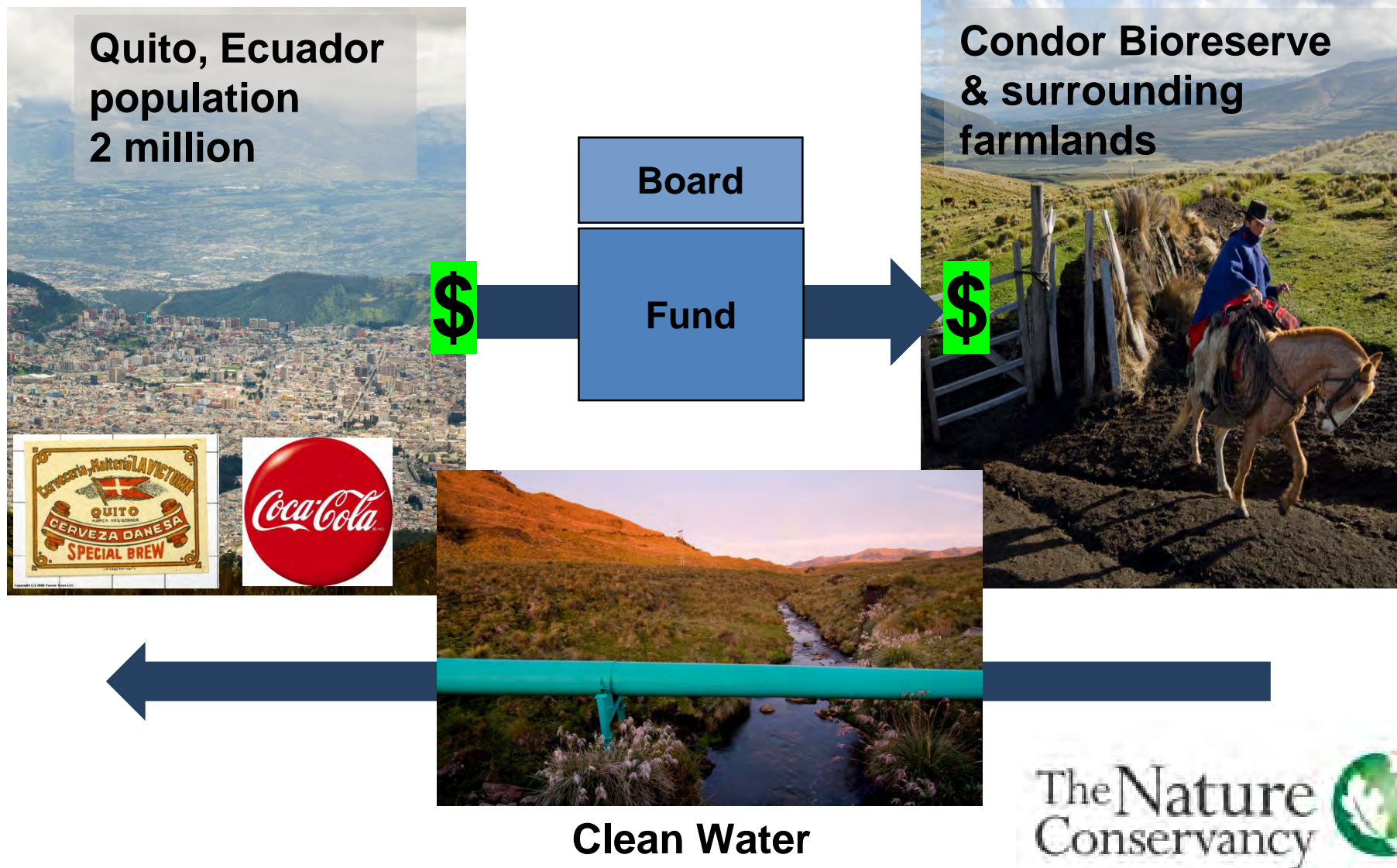


RIO GRANDE
WATER FUND
A Wildfire and Water Source
Protection Project

Restore Fire-Adapted Forests



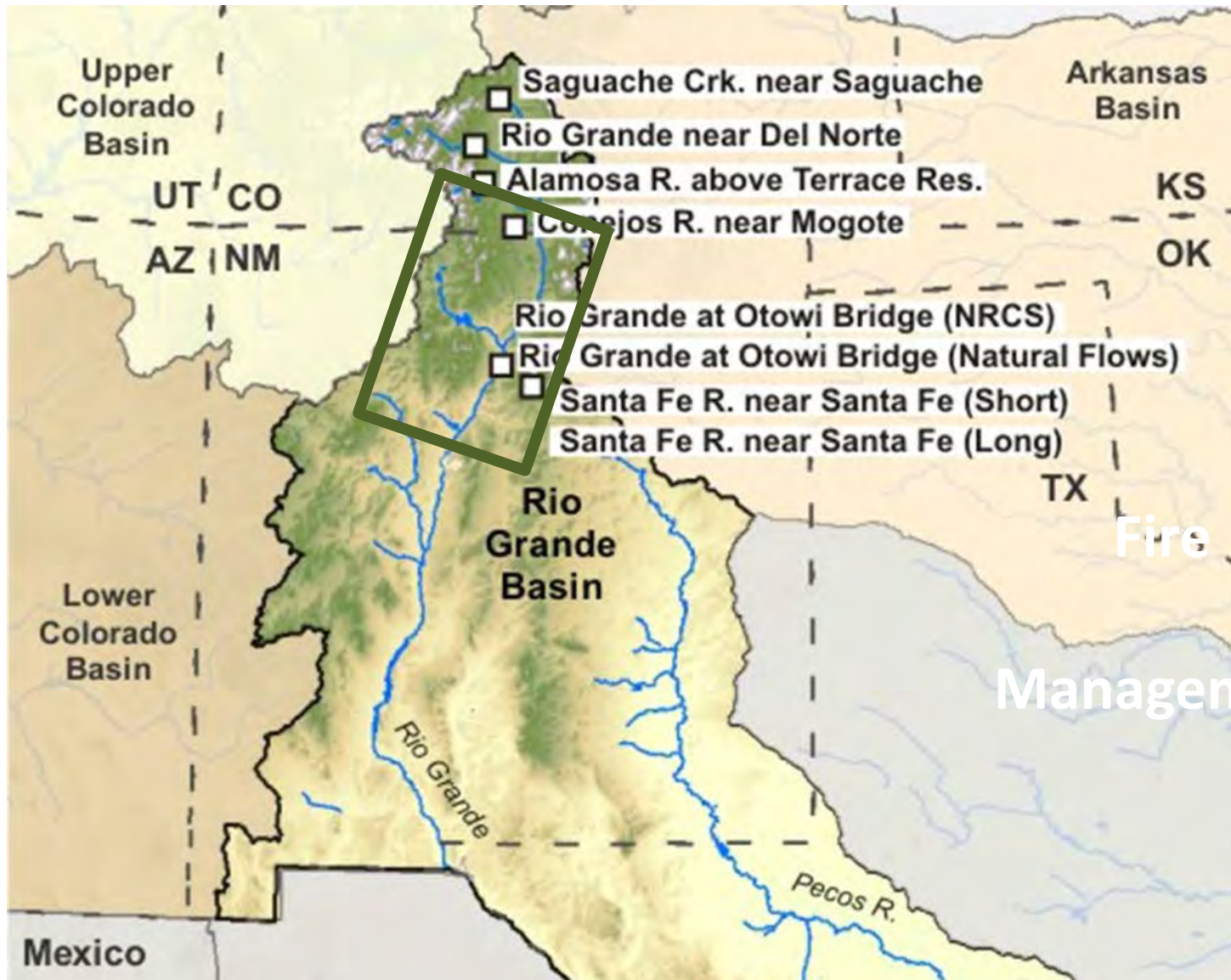
Latin America Water Fund Model



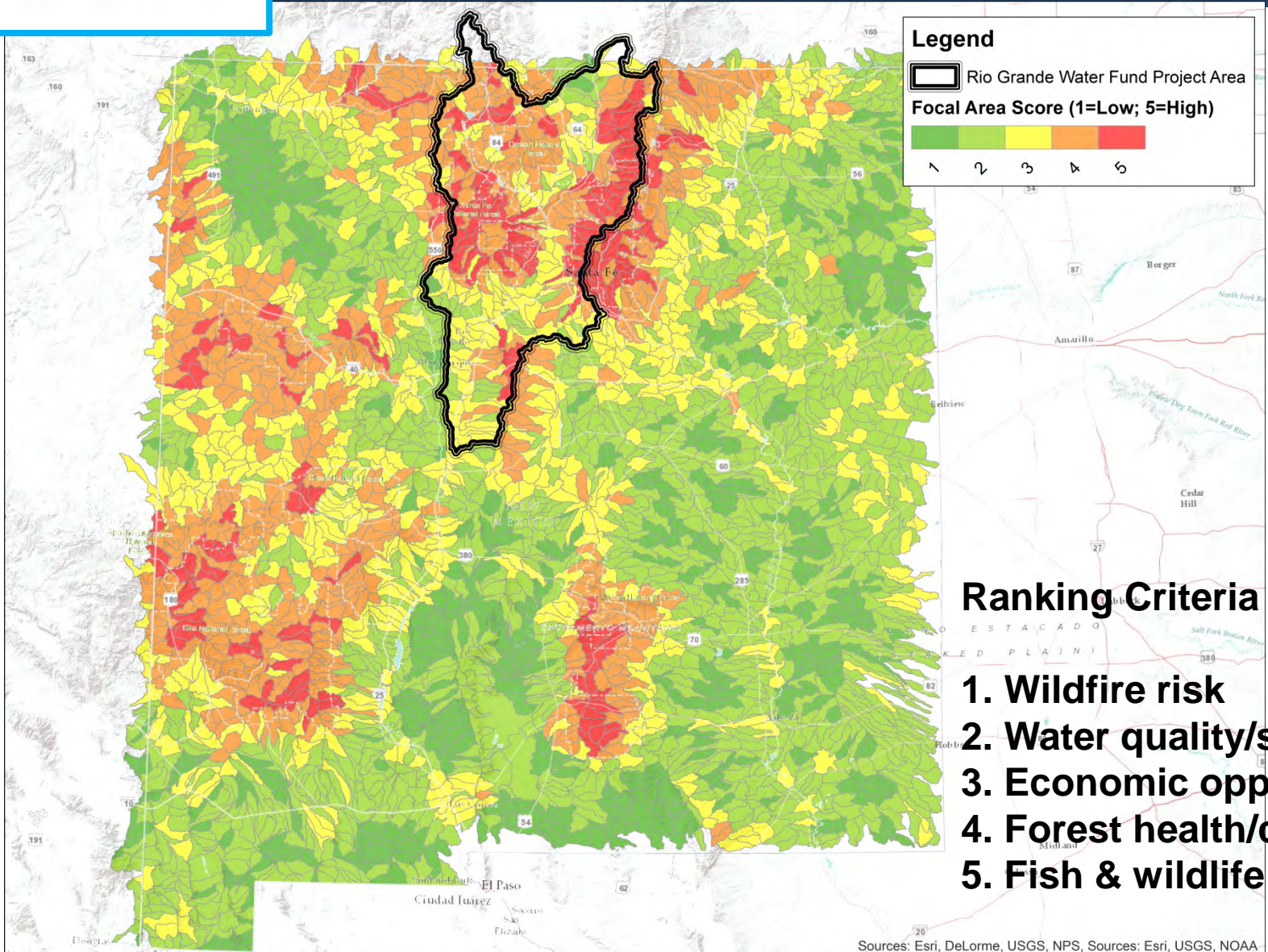
First Experiment: Santa Fe Water Source Protection Fund



Large Scale Solution



Water for 1 Million People



Goals

- 
- A photograph of a person in a forest setting a controlled fire. The person is standing in the center, surrounded by tall pine trees. A large plume of white smoke rises from the fire, partially obscuring the trees. The ground is covered in snow and dry leaves. The fire is visible in the background, with orange flames and smoke.
- 1. Restore 600,000 acres over 20 years**
 - 2. Offer large-scale solution to forest health and resilience**

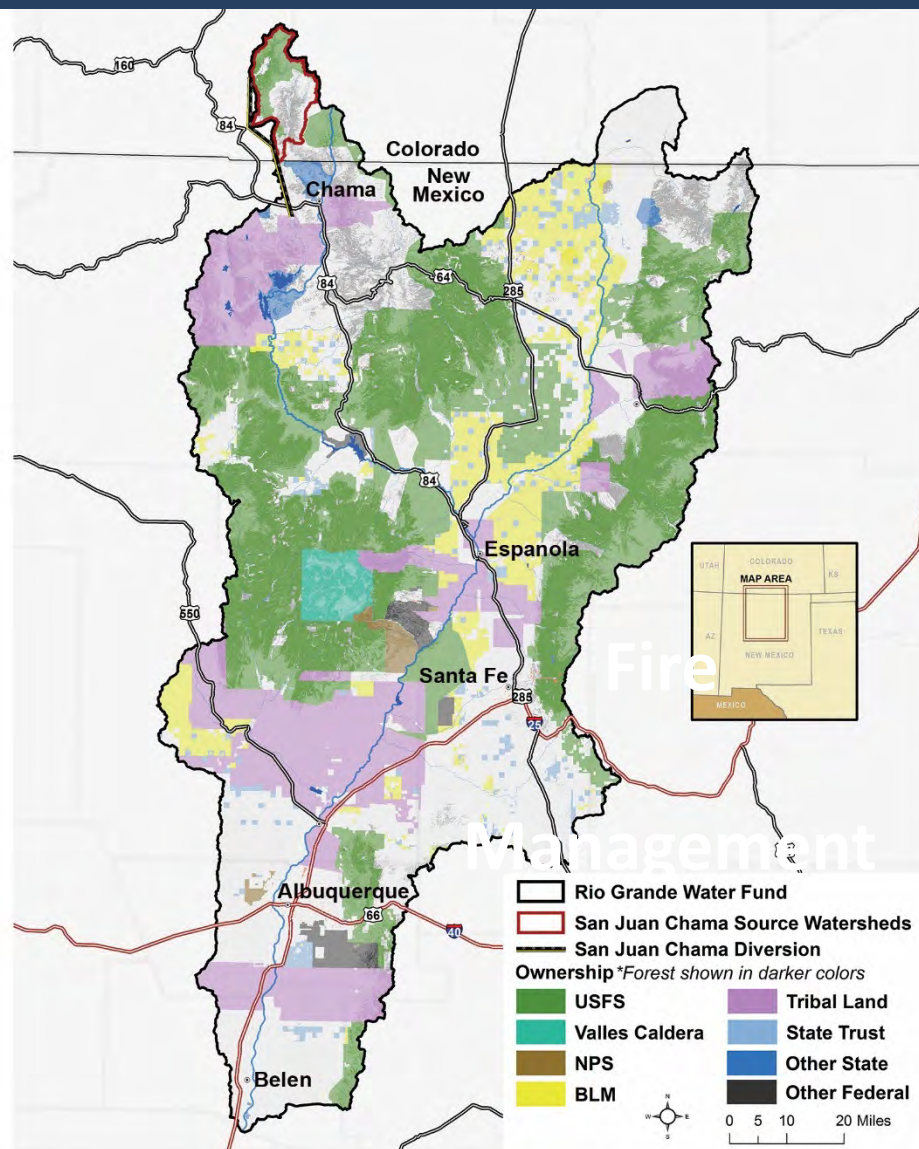
Accelerate Pace & Scale

Baseline in 2012:
3,000-5,000 acres/year

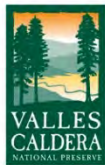
Restoration Goal:
30,000 acres/year or
600,000 acres in 20 years

Baseline funding:
\$6 million/year

Funding Goal:
\$21 million/year



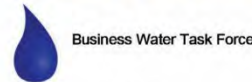
Collaborative Charter



US Army Corps of Engineers
Albuquerque District



City of Santa Fe Water Division



New Mexico Coalition



STATE LAND OFFICE



LOS ALAMOS



Bohannon & Huston

PRESBYTERIAN

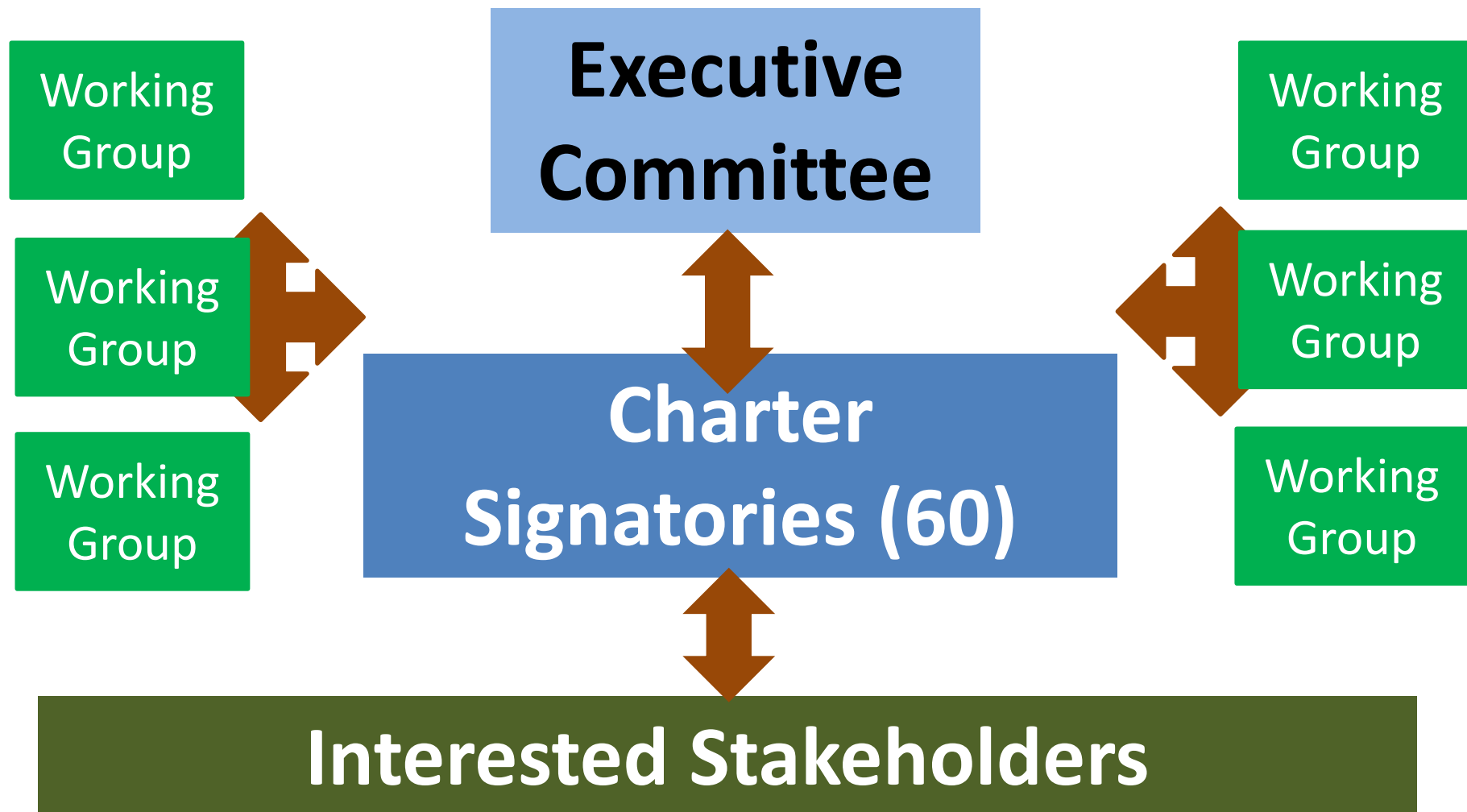
forest GUILD



SWCA
ENVIRONMENTAL CONSULTANTS



Advisory Board to Signatories



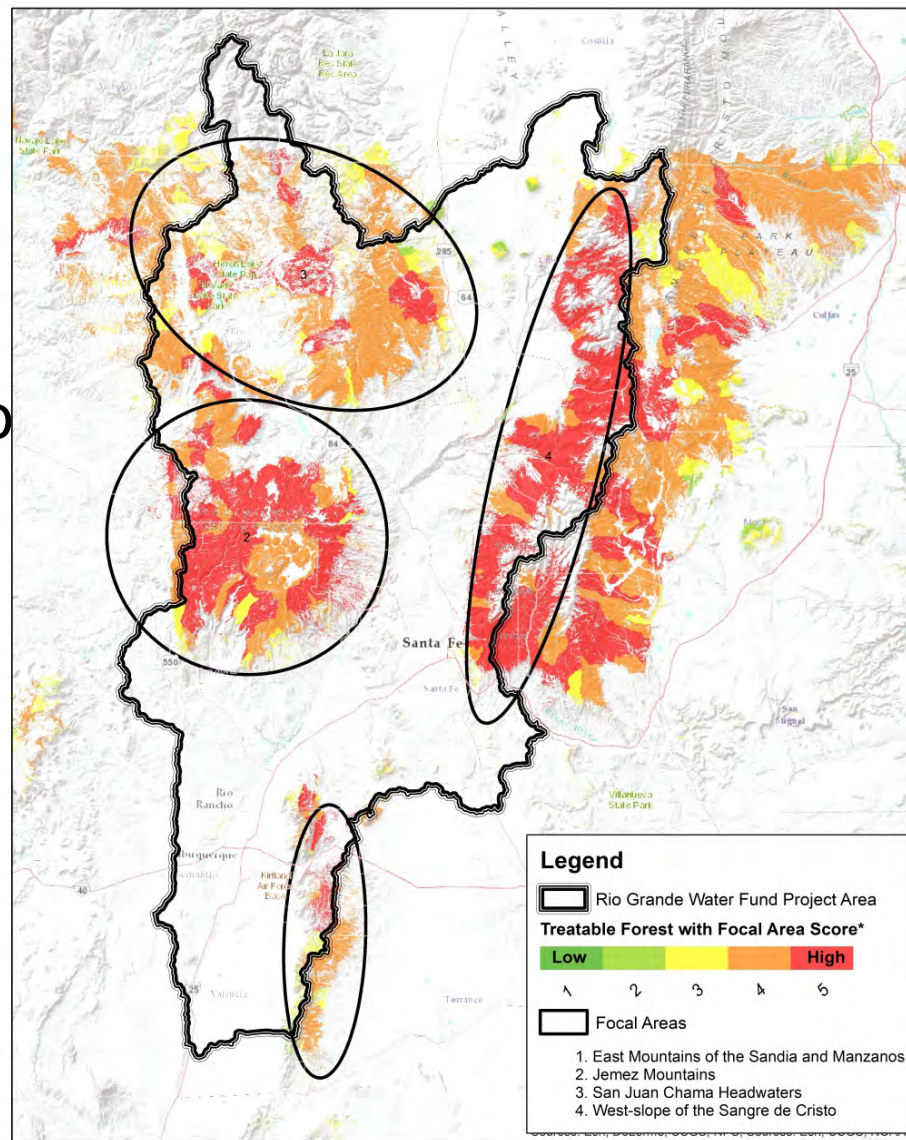
Focal Areas

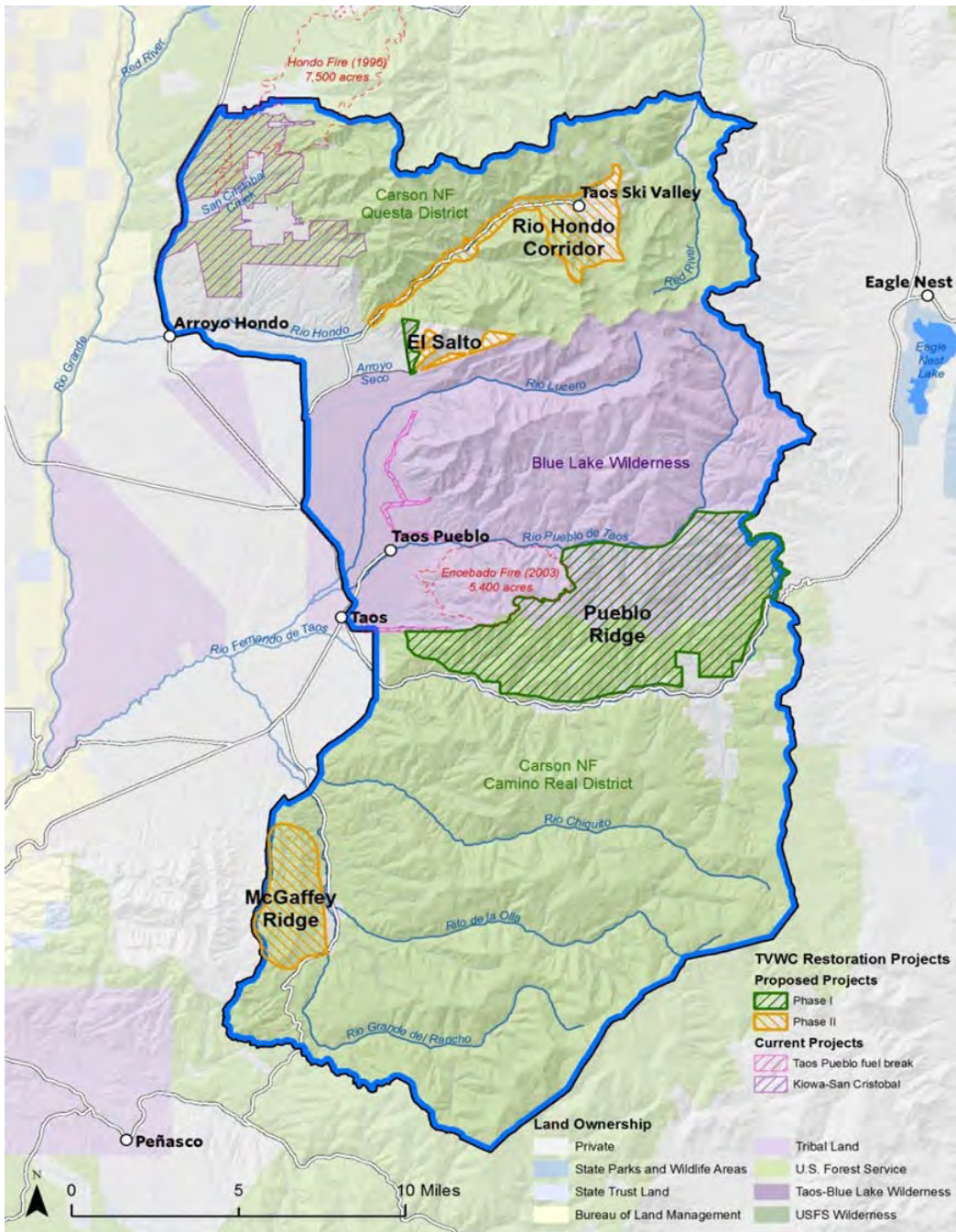
Focal Areas

1. East Mountains
2. Jemez Mountains
3. West slope Sangre de Cristo
 - a. Taos Valley
 - b. Greater Santa Fe
4. Chama & San Juan-Chama

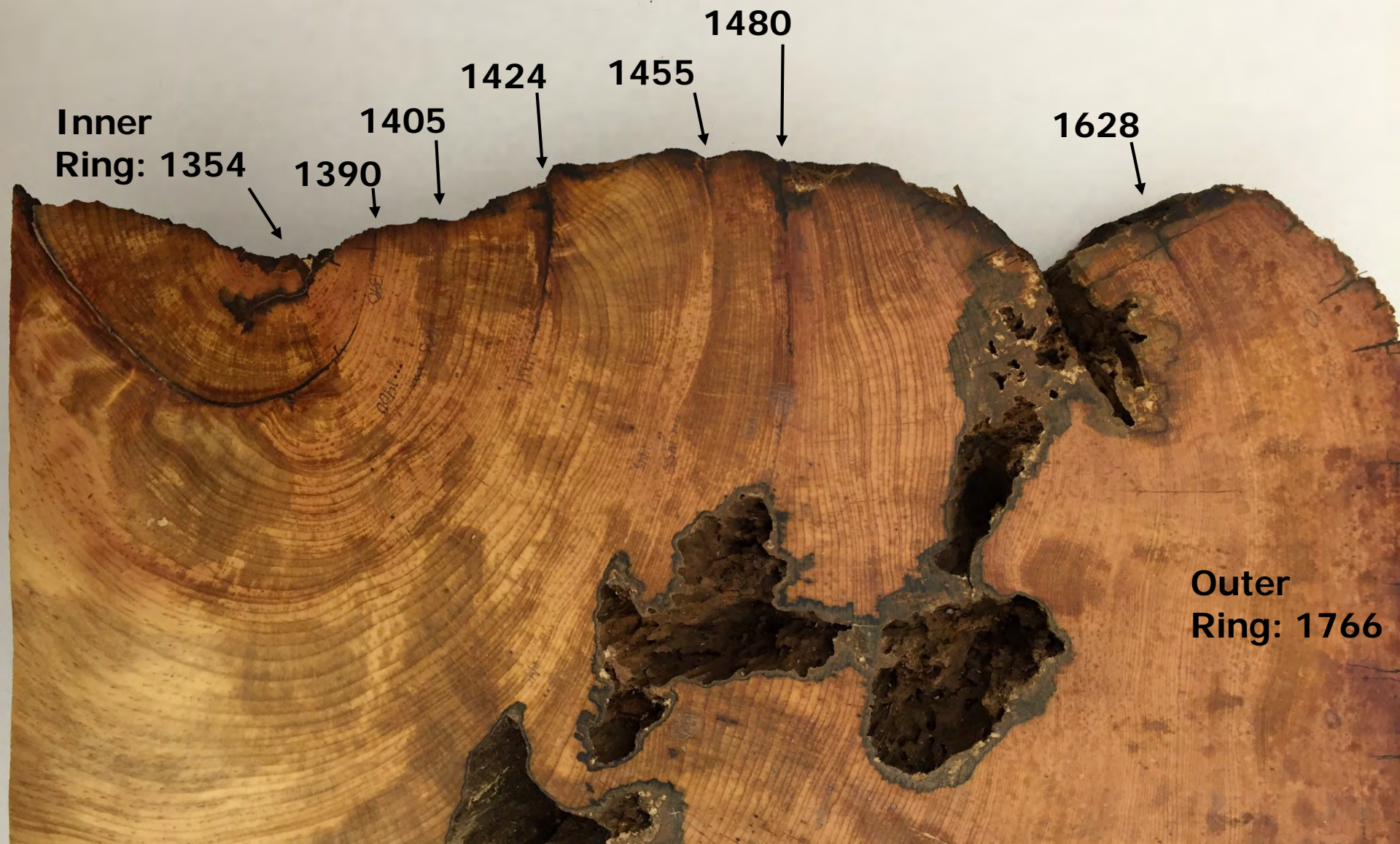
Project Criteria

1. Condition or threat
2. Opportunity
3. Urgency
4. Economic development

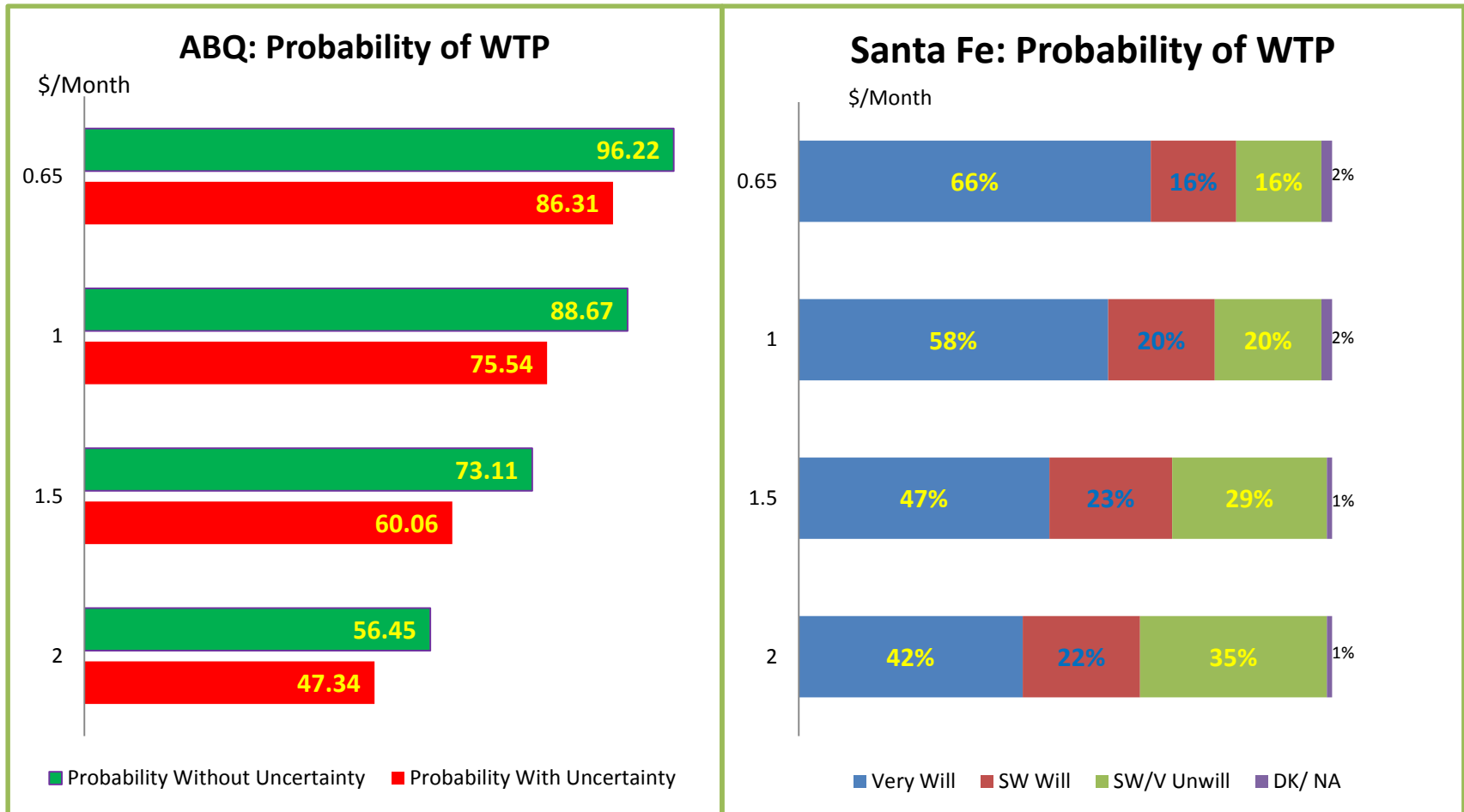




Co-investment in Science



Willingness to Pay: Albuquerque & Santa Fe



Mean Household WTP (Tobit Model)

Without accounting for Uncertainty: approx \$40/year

With accounting for uncertainty: approx \$31/year

New Mexico Forest and Watershed Restoration Act

1
2
3
4
5
6
7
8
9
10
11
12
13
14
15
16
17
18
19
20
21
22
23
24
25

underscored material = new
[bracketed material] = delete

HOUSE BILL 38

52ND LEGISLATURE - STATE OF NEW MEXICO - FIRST SESSION, 2015

INTRODUCED BY

Paul C. Bandy and Peter Wirth

FOR THE WATER AND NATURAL RESOURCES COMMITTEE

AN ACT

RELATING TO NATURAL RESOURCES; ENACTING THE FOREST AND
WATERSHED RESTORATION ACT; PROVIDING LONG-TERM FUNDING FOR
FOREST AND WATERSHED RESTORATION; CREATING THE FOREST AND
WATERSHED RESTORATION BOARD; CREATING THE FOREST AND WATERSHED
RESTORATION FUND; PROVIDING FOR A DISTRIBUTION FROM THE
INSURANCE DEPARTMENT SUSPENSE FUND TO THE FOREST AND WATERSHED
RESTORATION FUND; MAKING AN APPROPRIATION.

BE IT ENACTED BY THE LEGISLATURE OF THE STATE OF NEW MEXICO:

SECTION 1. [NEW MATERIAL] SHORT TITLE.--Sections 1
through 8 of this act may be cited as the "Forest and Watershed
Restoration Act".

SECTION 2. [NEW MATERIAL] DEFINITIONS.--As used in the
Forest and Watershed Restoration Act:

A. "board" means the forest and watershed

.197506.1

Monitoring & Adaptive Management



Outcomes



Scale of Restoration

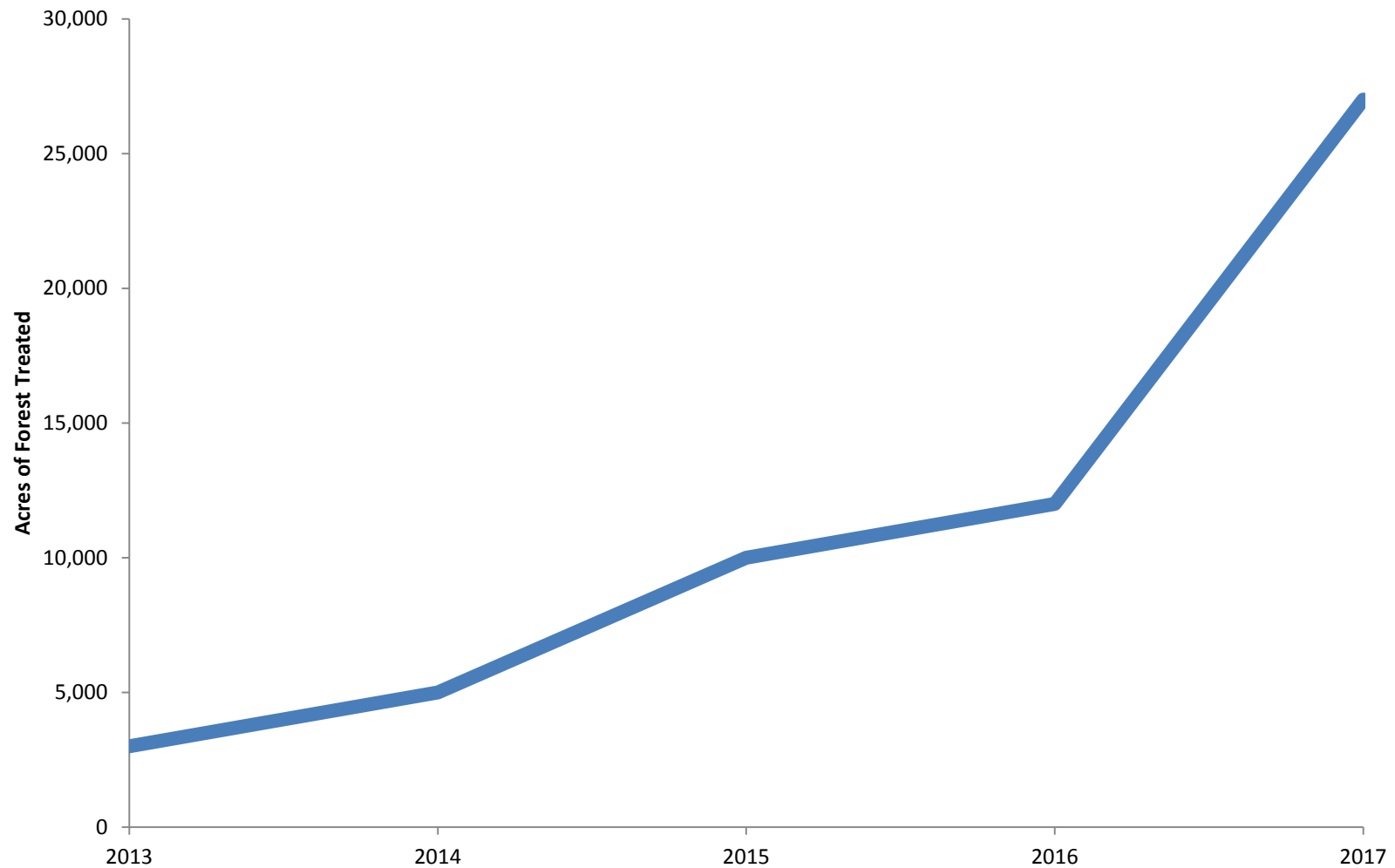
ACRES	2014-2015	2015-2016
Direct Planning Acres	0	2,414
Leveraged Planning Acres	0	21,890
Direct Treatment Acres	130	561
Leveraged Treatment Acres	10,000	12,000



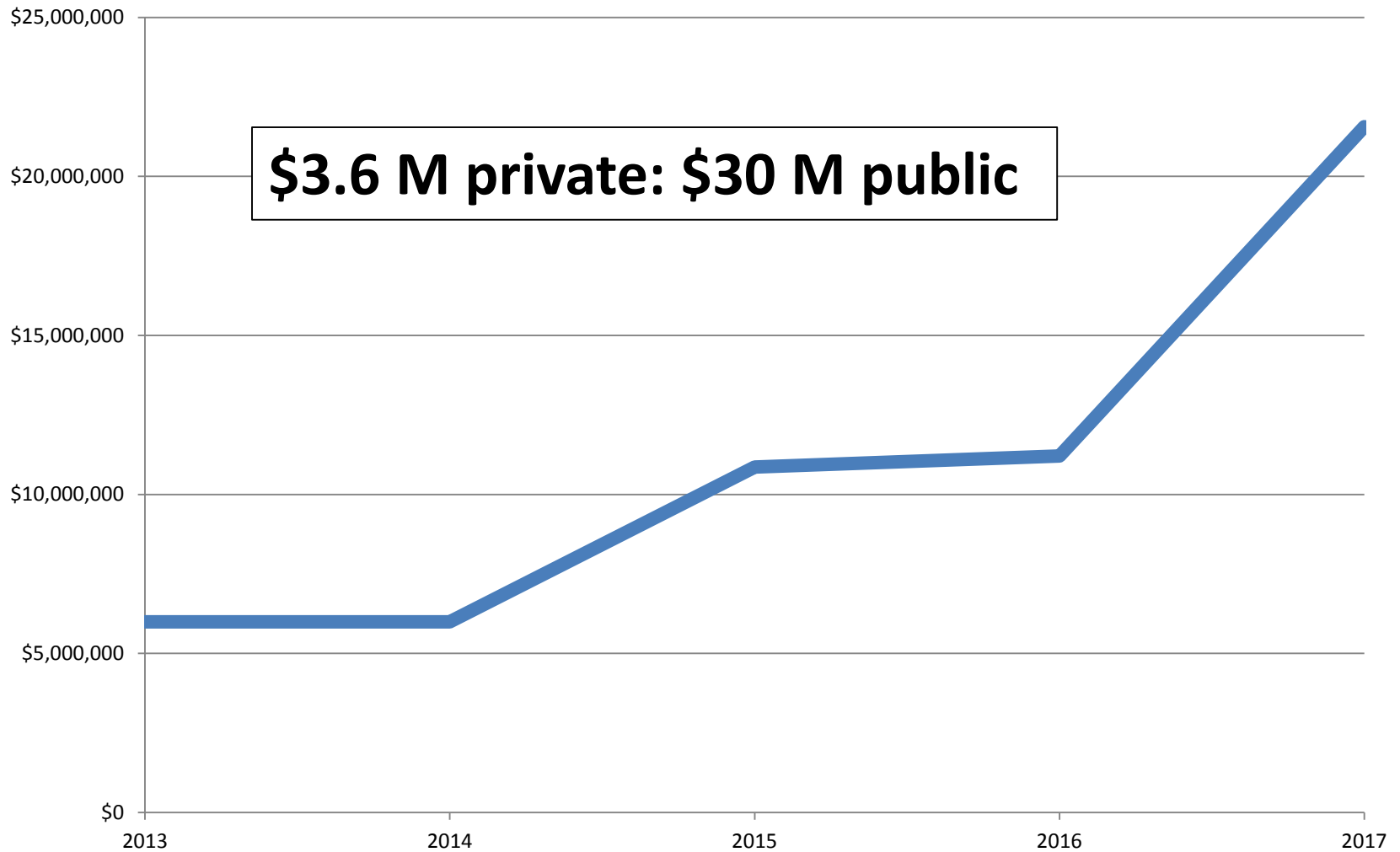
2017	Acres
Planning	200,000
Thinning	18,000
Natural Fire	22,000
Rx Fire	9,000



Trend in Acres Restored



Public Funding Leveraged



Water Fund Resources

Water Funds Toolbox

- **Water Fund Project Cycle**
- **Case Studies**
- **Examples and Tools**
- **Online Training**
 - **Search: waterfundstoolbox**

